

## ECS-3S-2L Handheld Surface Scanner (P/N 100151)

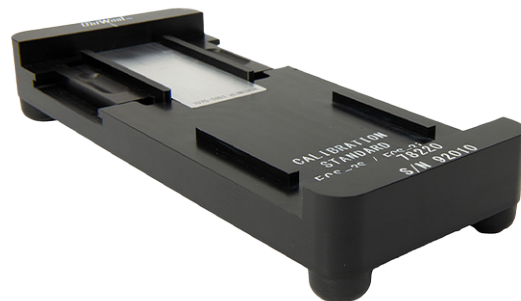
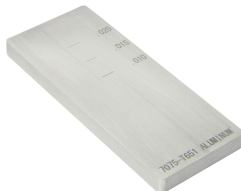
*This EVi-compatible scanner provides a constant speed circular scanning pattern.*

*The ECS-3S-2L scanner is ideal for surface scanning applications requiring highly accurate inspections, such as the military, commercial airlines, bridges, and some manufacturing plants. Application examples include lap joints, various flat flush fasteners, flat bars and flat-plate bar stock.*



### Highlights:

- **Weight:** 1 lbs, 2 oz (w/o head & bobbin)
- **Scan Type:** Surface
- **Scan Width:** Depends on head
- **Scan Speed:** 125 - 3,600 RPM
- **Scan Motion:** Rotary and linear
- **Frequency Range:** 100 Hz to 10 MHz
- **Coil Types Supported:** Absolute & Differential
- **Instrument Compatibility:** EVi

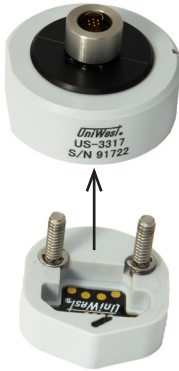


ECS-3 Reference Standard, P/N: 78222  
This standard comes with .010", .015", and .020"  
EDM notches for setup of the ECS-3 surface scanner  
and EVi.

HOLDER for ECS-3 Reference Standard, P/N: 78220  
This holder will secure Reference Standard 78222 to  
allow for calibration of the ECS-3 surface scanner  
with the EVi. **Reference standard is sold separately.**

## ECS-3S-2L Hand-Held Surface Scanner (P/N 100151)

Probe head



Bobbin assembly



	Head Ø inches		Frequency			
	0.82	1.50	1-10 kHz	20 kHz	200 kHz	2 MHz
US-3316 Removable probe head	✓					
US-3317 Removable probe head		✓				
US-3318 Bobbin assembly			✓			
US-3319 Bobbin assembly				✓		
US-3320 Bobbin assembly					✓	
US-3321 Bobbin assembly						✓